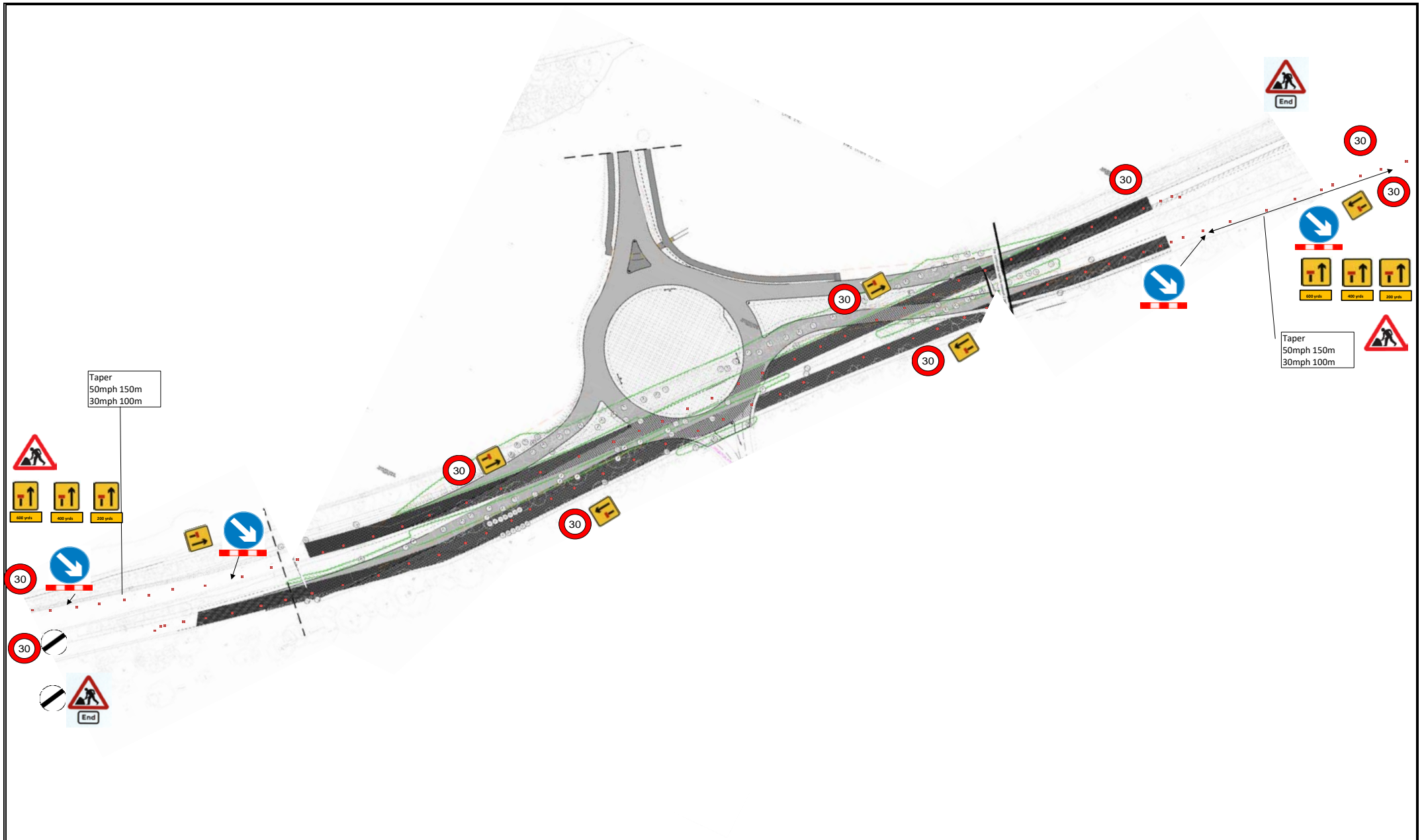


Title	Traffic Management Plans	Number	HC 01
Project	Hounsome Fields Basingstoke		
Works	Works to Central Reservation		
1)	Cone Size : 750 mm		
2)	Sign Size : 750 mm		
3)	Signs To Be Reflectorisised		
4)	Steady Beacons To Be Used At Night		
5)	Cone Spacing 9m		

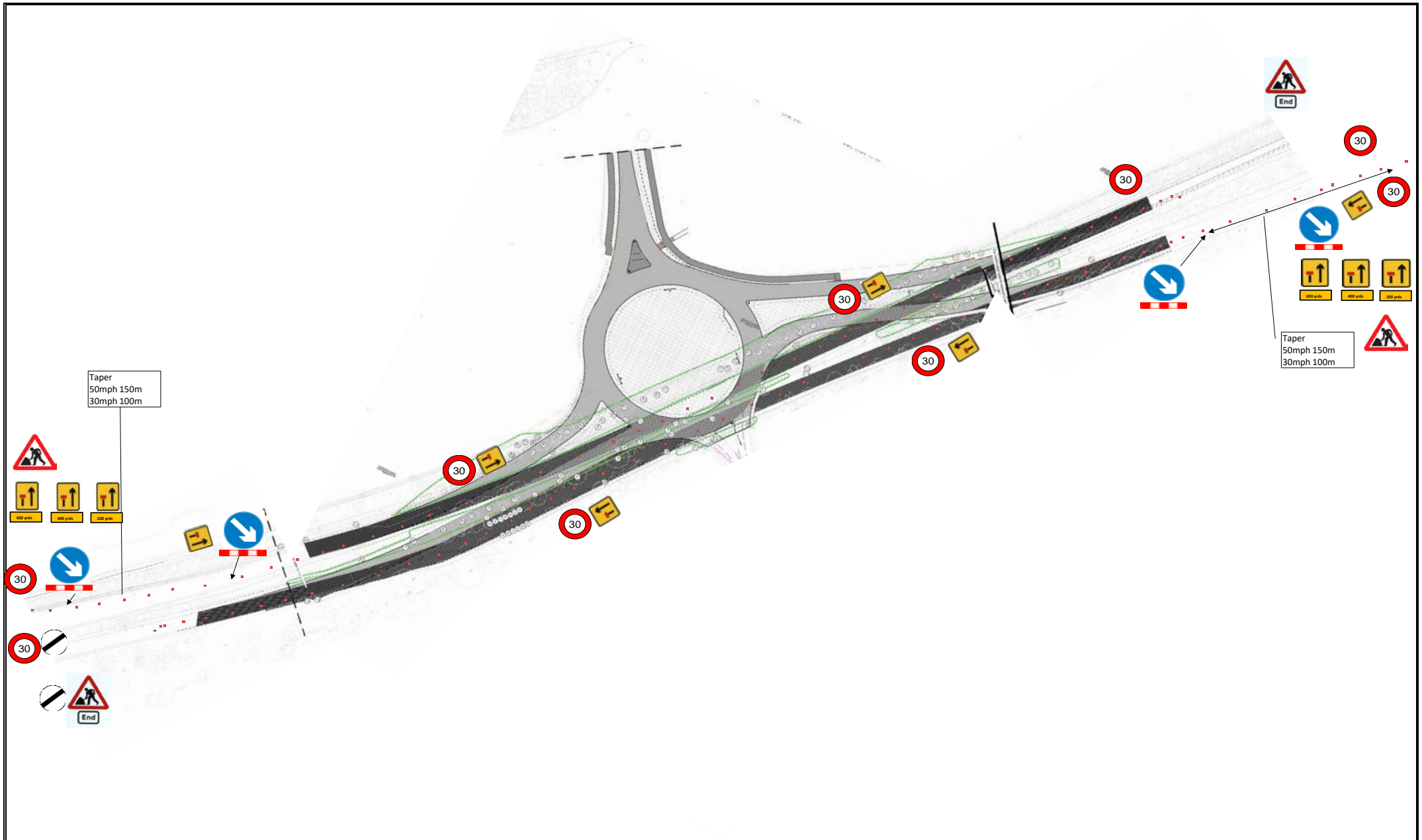


Taper
50mph 150m
30mph 100m

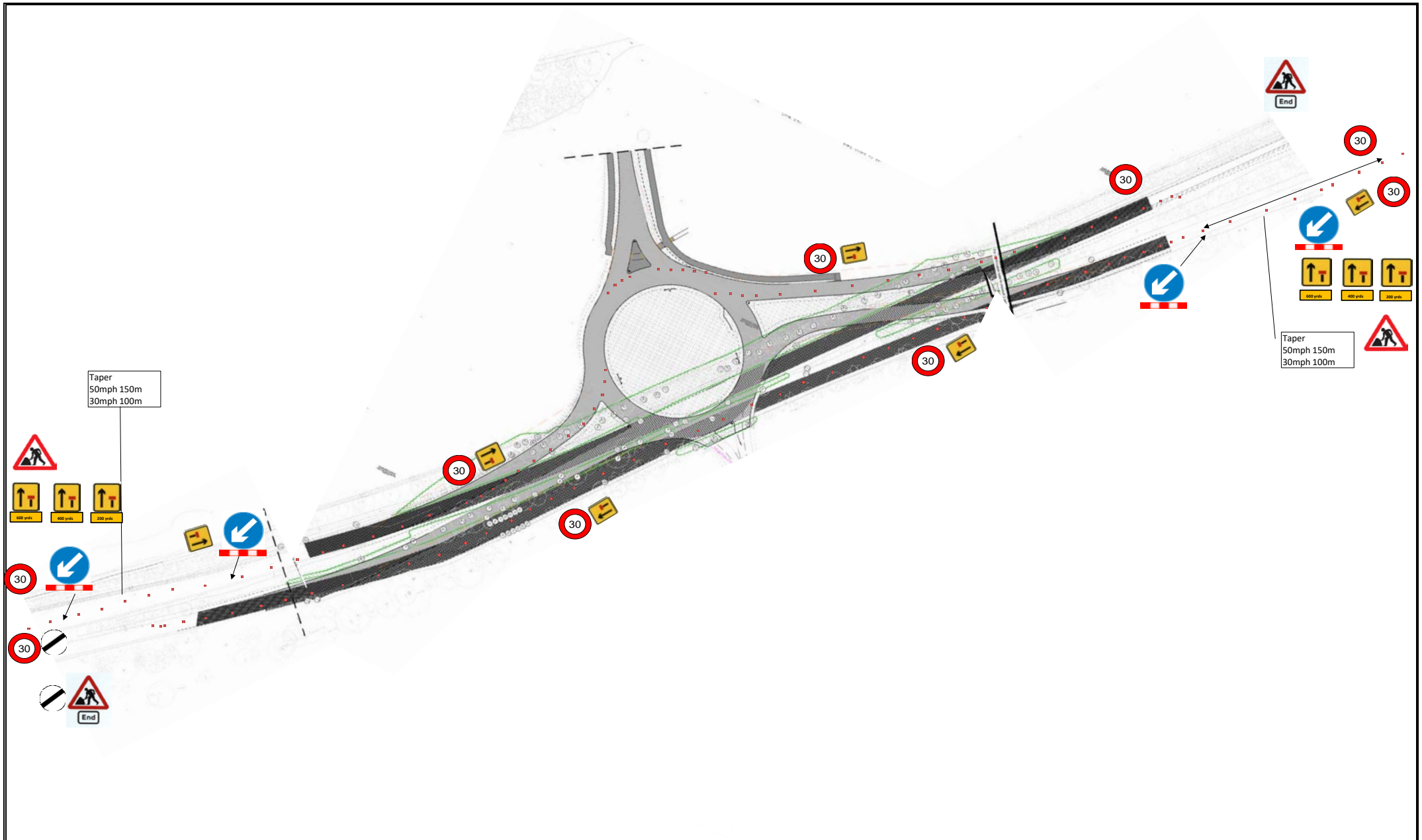
Taper
50mph 150m
30mph 100m

Title	Traffic Management Plans	Number	HC 02
Project	Hounsome Fields Basingstoke		
Works	Works to Lane 1		
1)	Cone Size : 750 mm		
2)	Sign Size : 750 mm		
3)	Signs To Be Reflectorised		
4)	Steady Beacons To Be Used At Night		
5)	Cone Spacing 9m		

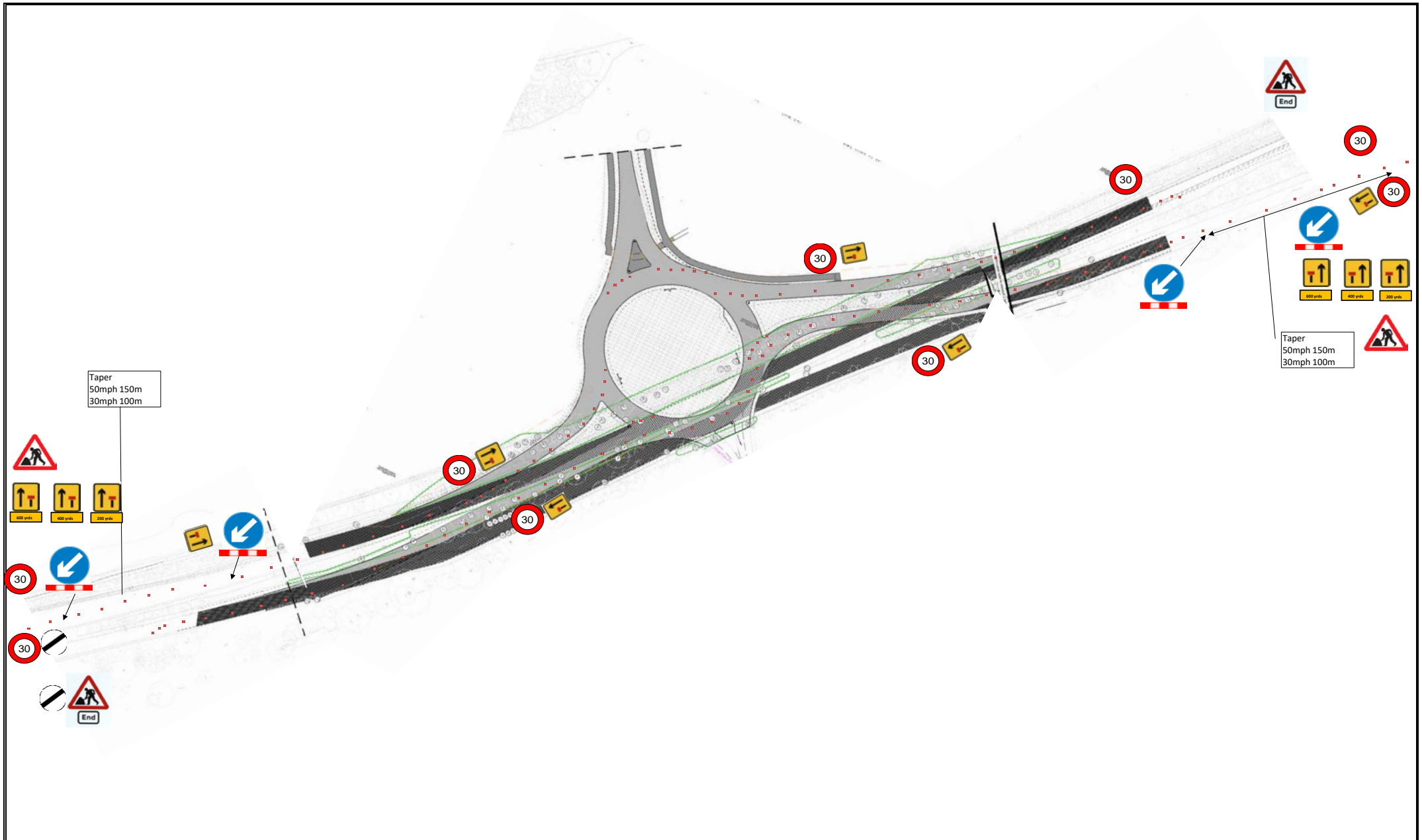




Title	Traffic Management Plans	Number	HC 03
Project	Hounesome Fields Basingstoke		
Works	Off Line Works		
1)	Cone Size : 750 mm		
2)	Sign Size : 750 mm		
3)	Signs To Be Reflectorisised		
4)	Steady Beacons To Be Used At Night		
5)	Cone Spacing 9m		



Title	Traffic Management Plans	Number	HC 04
Project	Hounesome Fields Basingstoke		
Works	Central Roundabout Area		
1)	Cone Size : 750 mm		
2)	Sign Size : 750 mm		
3)	Signs To Be Reflectorised		
4)	Steady Beacons To Be Used At Night		
5)	Cone Spacing 9m		



Title	Traffic Management Plans	Number	HC 05
Project	Hounesome Fields Basingstoke		
Works	Works on Old Carriageway and Tie Ins		
1)	Cone Size : 750 mm		
2)	Sign Size : 750 mm		
3)	Signs To Be Reflectorisised		
4)	Steady Beacons To Be Used At Night		
5)	Cone Spacing 9m		