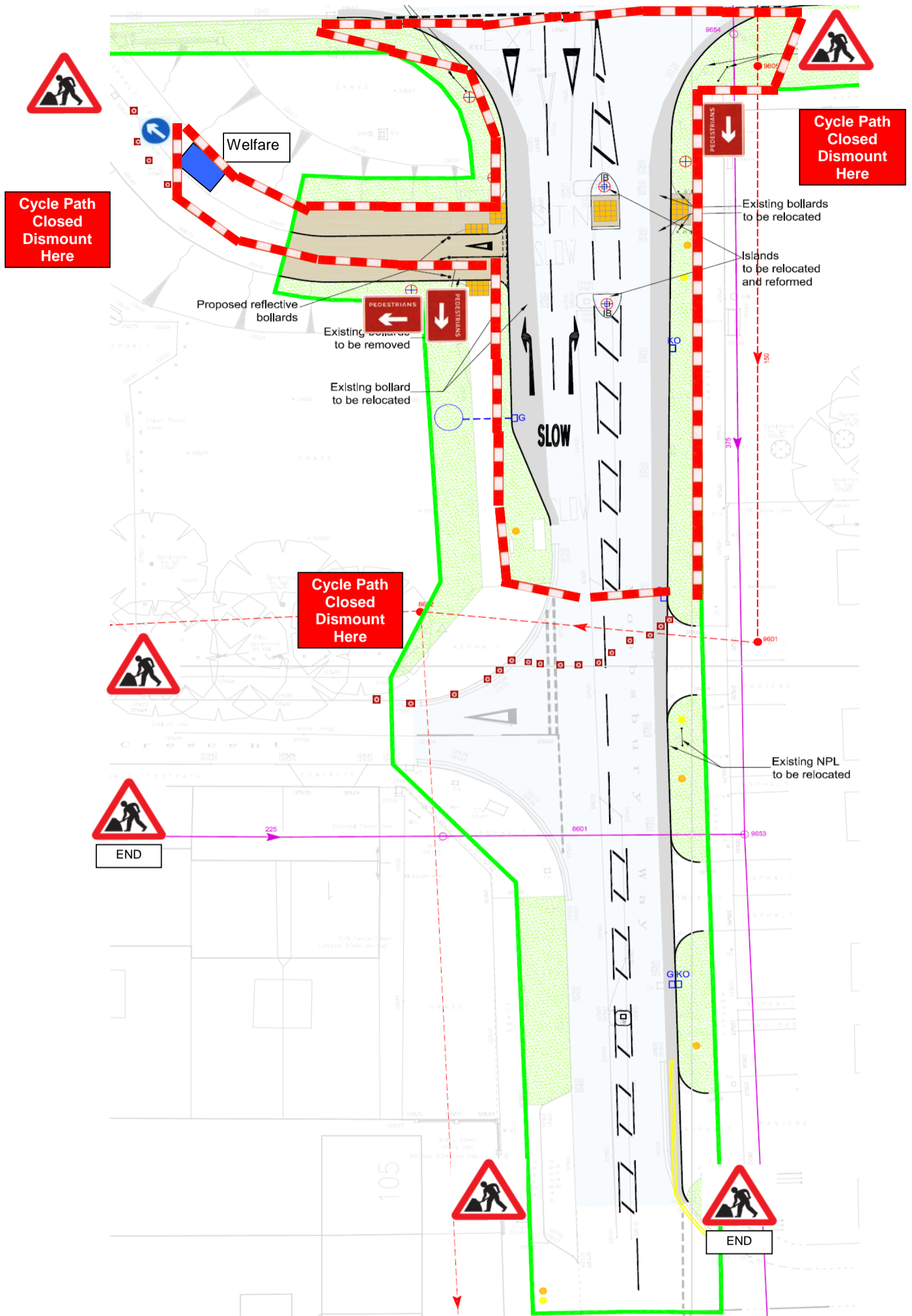
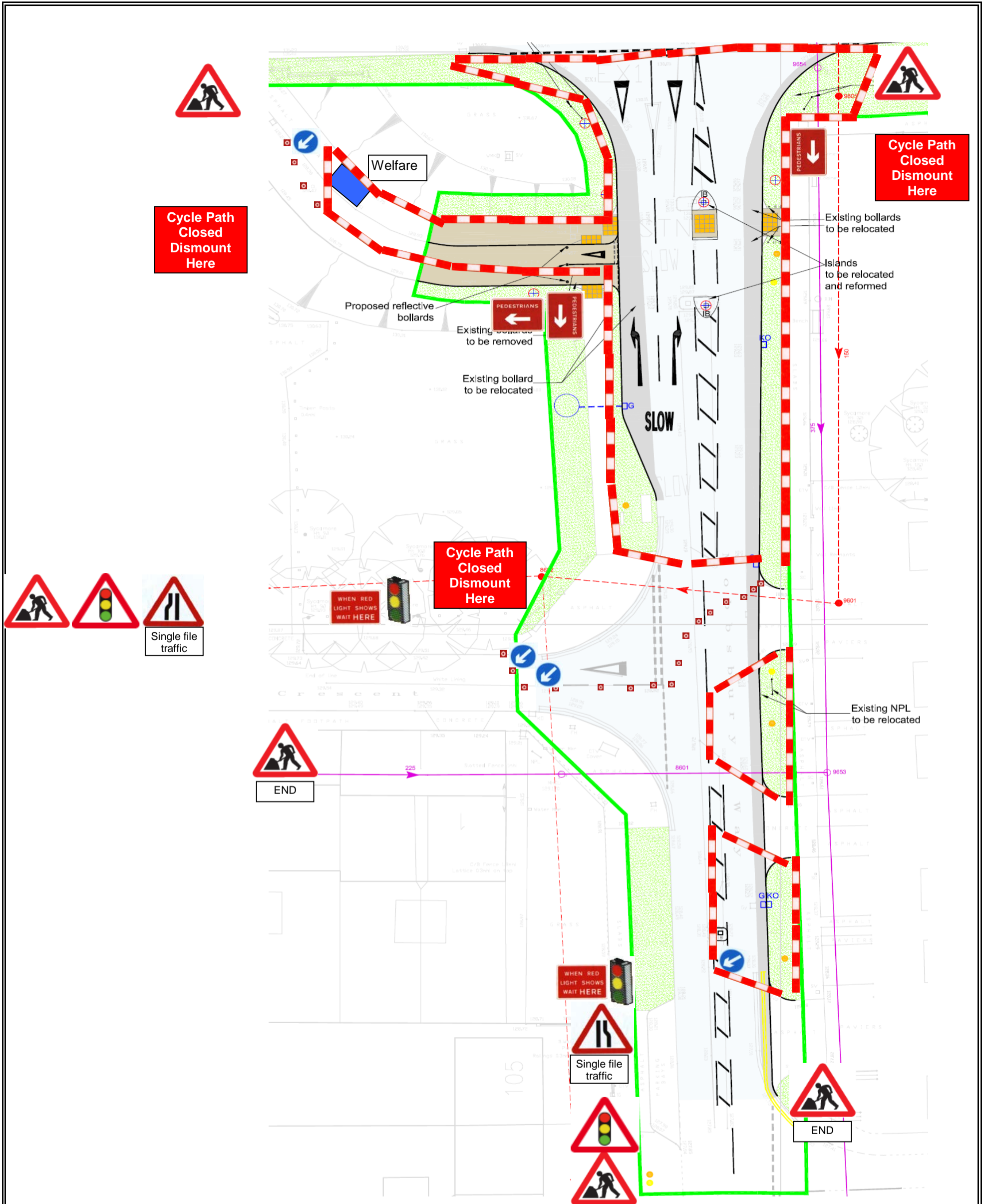




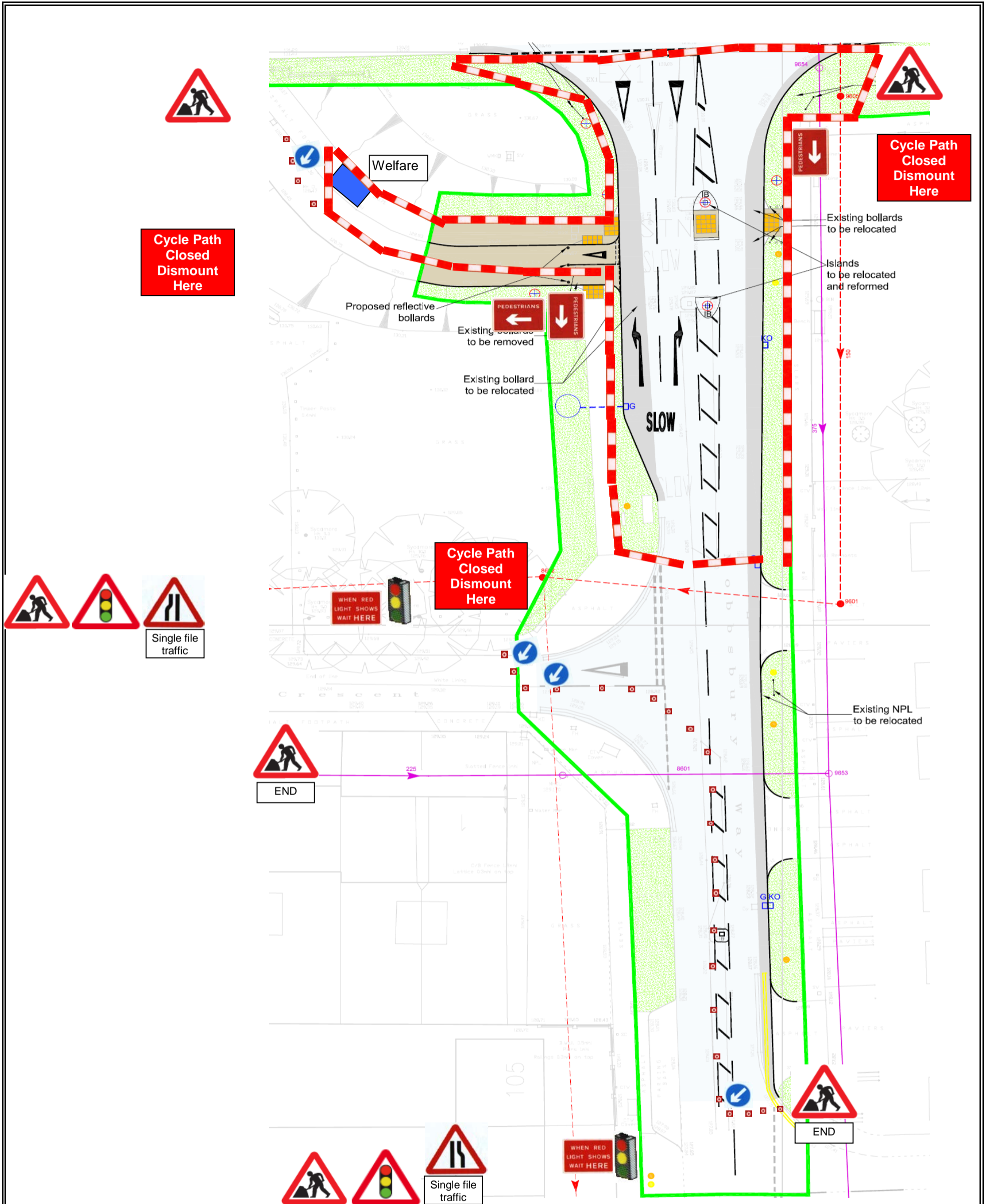
Title	Traffic Management Plans	Number	HC 01 Rev B
Project	Moddsbury Way, Stevenage		
Works	Road Closure Plan		
1)	Cone Size : 450 mm	2)	Sign Size : 750 mm
4)	Steady Beacons To Be Used At Night	3)	Signs To Be Reflectorised
		5)	Cone Spacing 5m



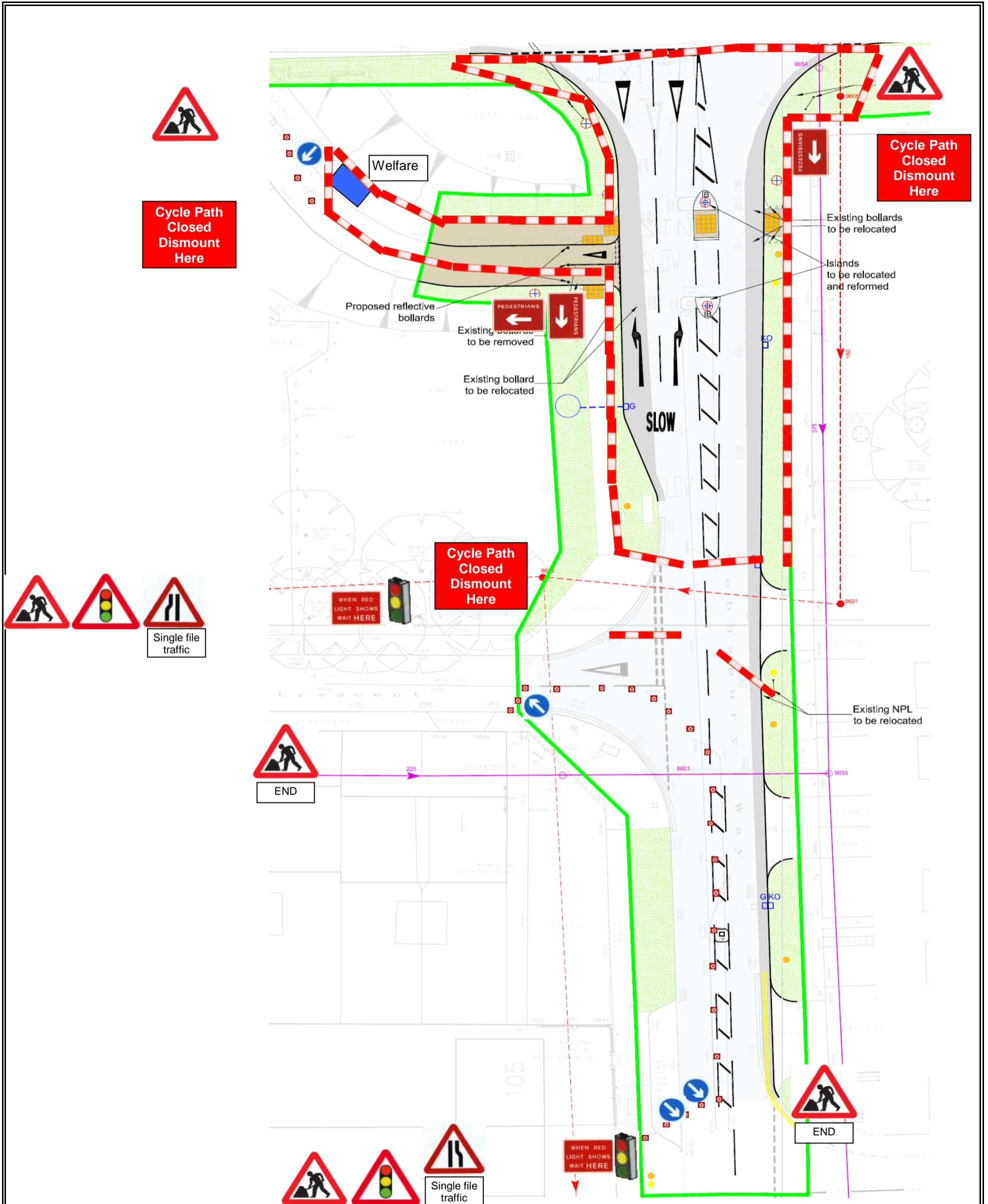
Title	Traffic Management Plans	Number	HC 02 Rev A
Project	Moddsbury Way, Stevenage		
Works	S278		
1)	Cone Size : 450 mm		
2)	Sign Size : 750 mm		
3)	Signs To Be Reflectorised		
4)	Steady Beacons To Be Used At Night		
5)	Cone Spacing 5m		



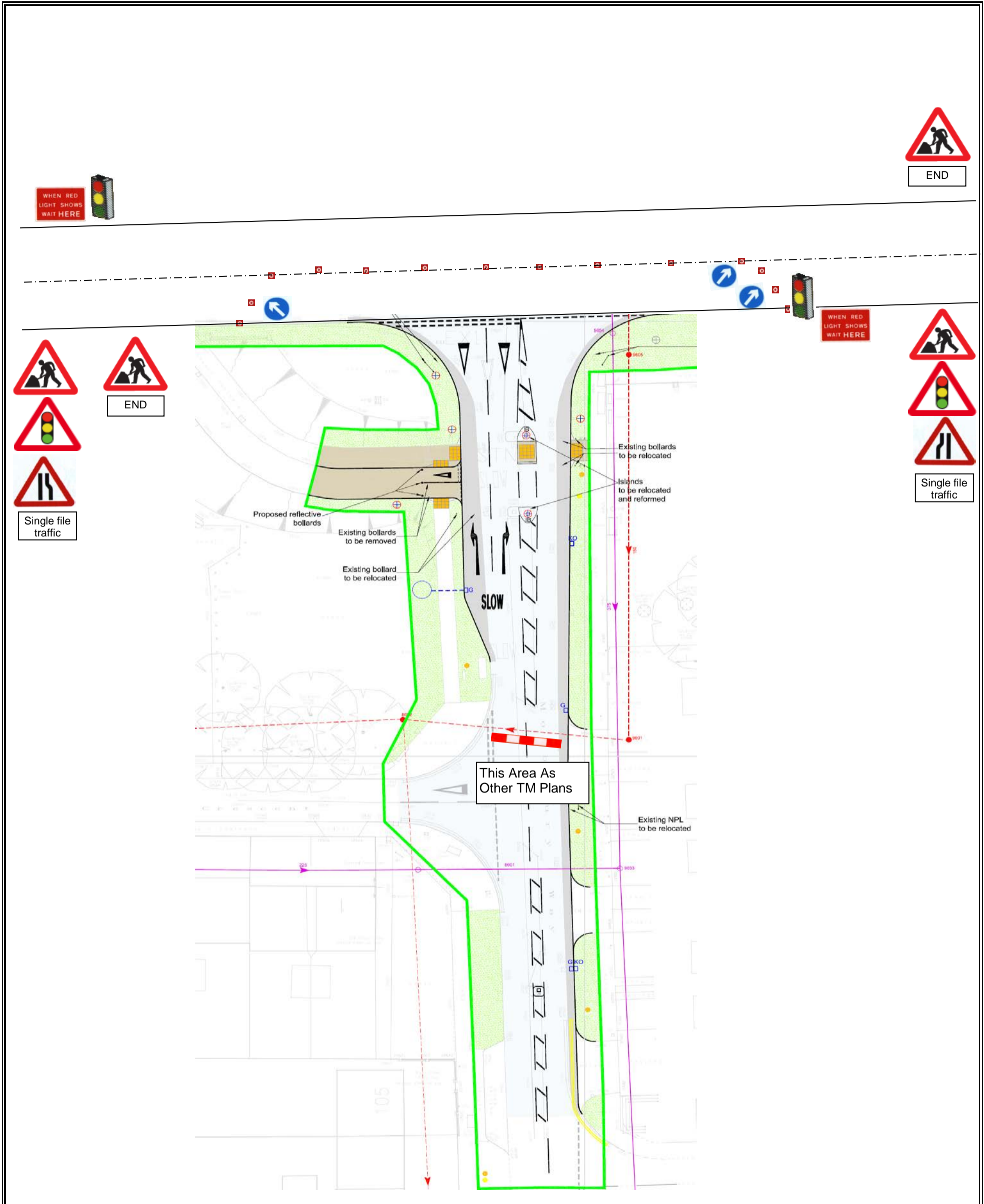
Title	Traffic Management Plans	Number	HC 03 Rev A
Project	Moddsbury Way, Stevenage		
Works	S278 - Widening		
1)	Cone Size : 450 mm		
2)	Sign Size : 750 mm		
3)	Signs To Be Reflectorised		
4)	Steady Beacons To Be Used At Night		
5)	Cone Spacing 5m		



Title	Traffic Management Plans	Number	HC 04 Rev A
Project	Moddsbury Way, Stevenage		
Works	S278 - Surfacing		
1)	Cone Size : 450 mm		
2)	Sign Size : 750 mm		
3)	Signs To Be Reflectorised		
4)	Steady Beacons To Be Used At Night		
5)	Cone Spacing 5m		



Title	Traffic Management Plans	Number	HC 05 Rev A
Project	Moddsbury Way, Stevenage		
Works	S278 -Surfacing		
1)	Cone Size : 450 mm		
2)	Sign Size : 750 mm		
3)	Signs To Be Reflectorised		
4)	Steady Beacons To Be Used At Night		
5)	Cone Spacing 5m		



Title	Traffic Management Plans	Number	HC 06 Rev A
Project	Moddsbury Way, Stevenage		
Works	S278 - Surfing Tie In on Fairlands Road		
1)	Cone Size : 450 mm		
2)	Sign Size : 750 mm		
3)	Signs To Be Reflectorised		
4)	Steady Beacons To Be Used At Night		
5)	Cone Spacing 5m		