

Hassocks

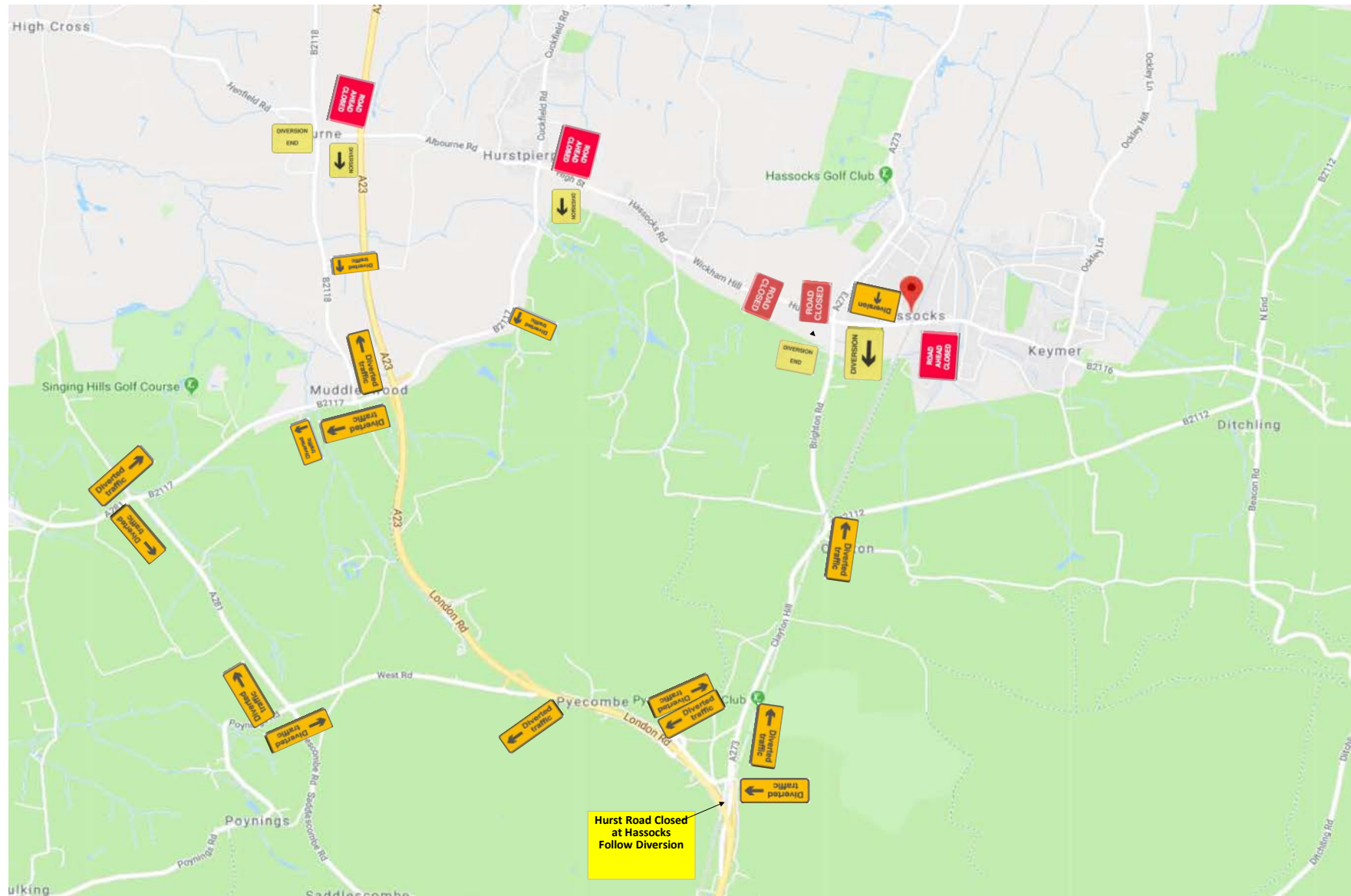


Rev B

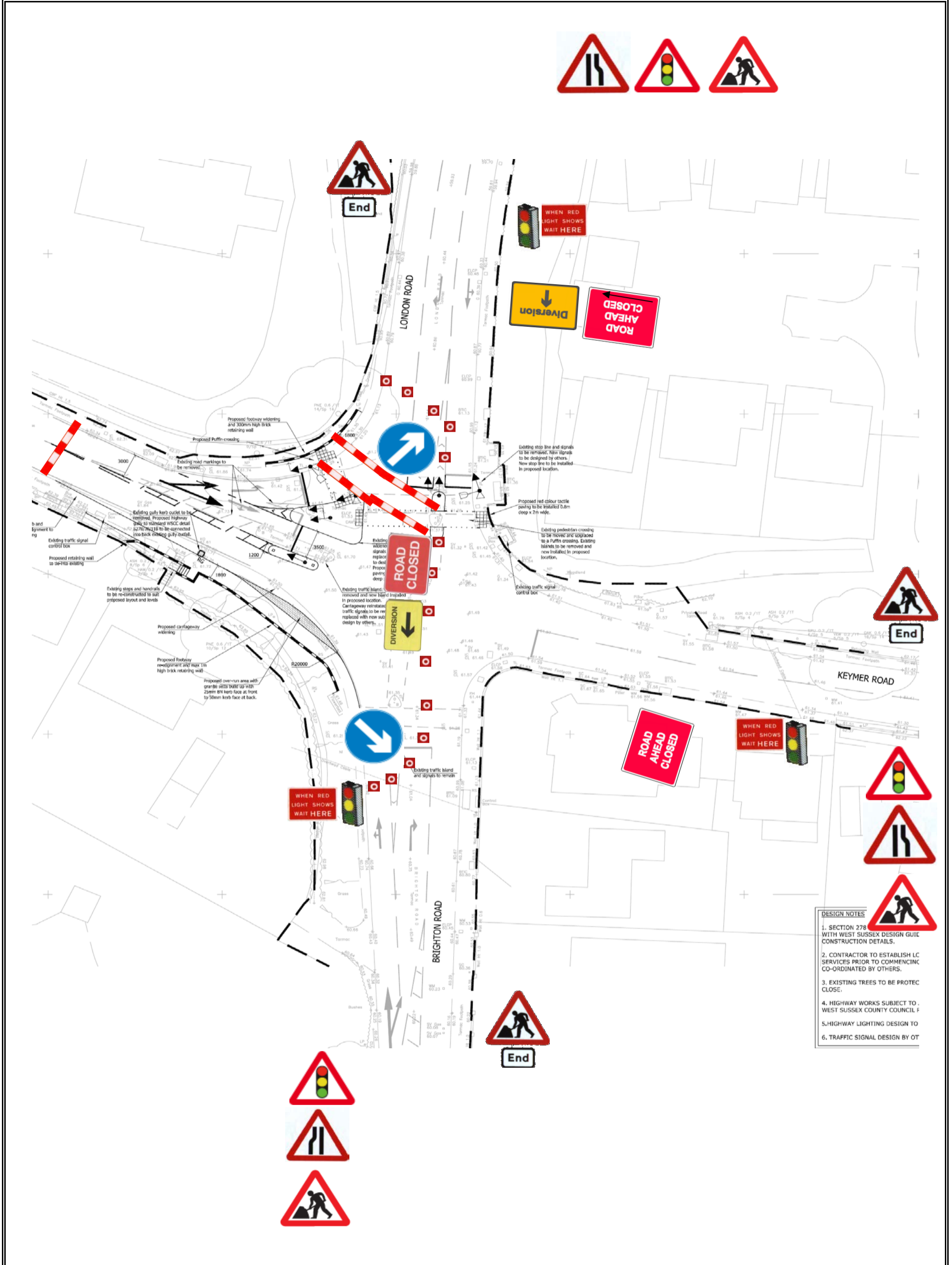
Hope & Clay (Construction) Ltd

ID	Name	Start	Finish	Duration	Jul		Aug				Sep				Oct				Nov						
					22	29	5	12	19	26	2	9	16	23	30	7	14	21	28	4	11	18			
					1	2	3	4	5	6	7	8	9	10	11	12	13	14	15	16	17	18			
1	Crossroads																								
2																									
3	Close Road	24/07/19	02/09/19	29d																					
4	4 Way Temporary Traffic Lights	03/09/19	08/11/19	49d																					
5	TM to be removed for London to Brighton Car Run	01/11/19	01/11/19	0d																					
6																									
7	Construct Retaining Walls & Steps	24/07/19	13/08/19	15d																					
8	Remove Existing Signals	24/07/19	26/07/19	3d																					
9	Excavate Southern Widening	29/07/19	30/07/19	2d																					
10	Stone Up	31/07/19	01/08/19	2d																					
11	Gullies	02/08/19	02/08/19	1d																					
12	Kerbing	05/08/19	06/08/19	2d																					
13	Overrun Strip	07/08/19	12/08/19	4d																					
14	Breakup Existing Islands	13/08/19	15/08/19	3d																					
15	Signal Ducting	11/09/19	26/09/19	12d																					
16	Construct Islands	16/08/19	20/08/19	3d																					
17	Nal Sockets	21/08/19	23/08/19	3d																					
18	Tactiles	26/08/19	27/08/19	2d																					
19	Reconstruct London Road Island	28/08/19	30/08/19	3d																					
20	Signals Ducting Across London Road	28/08/19	30/08/19	3d																					
21	Signals Ducting Keymar Road	02/09/19	10/09/19	7d																					
22	Tactiles																								
23	Signals Ducting London Road South Bound	11/09/19	27/09/19	13d																					
24	Signals Ducting London Road North Bound	30/09/19	16/10/19	13d																					
25	Street Lighting	17/10/19	23/10/19	5d																					
26																									
27	Signals Installation	21/10/19	08/11/19	15d																					
28	Signage	22/10/19	23/10/19	2d																					
29	Surfacing	24/10/19	25/10/19	2d																					
30	Road Markings	08/11/19	08/11/19	1d																					

▬ 4 Way Temp Lights
 ◆ Veteran Car Run TM
 ▬ Road Closure



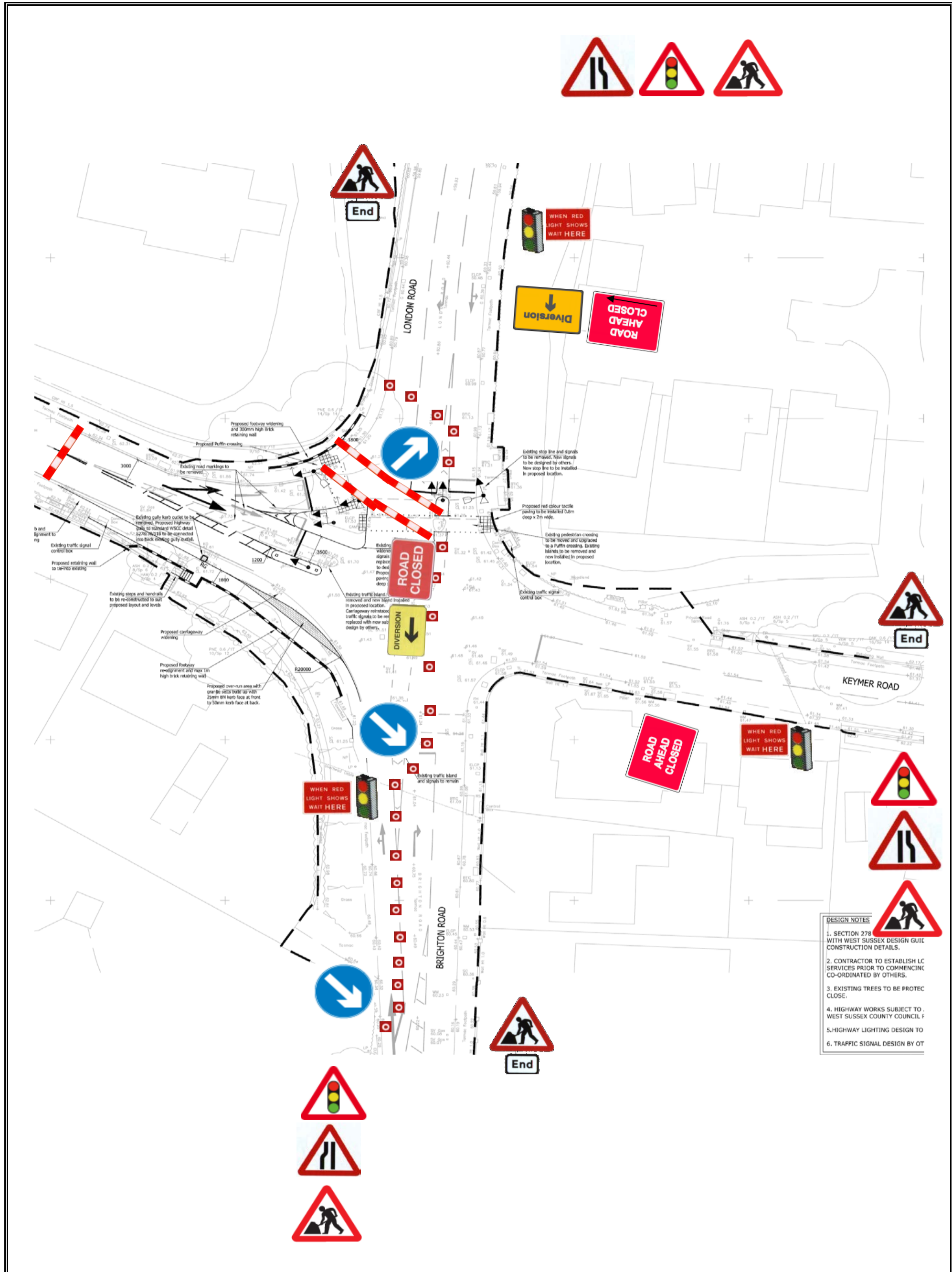
Title	Traffic Management Plans		Number	HC 10 Rev B
Project	London Road Hassocks			
Works	Road Closure Plan			
1)	Cone Size : 450 mm	2)	Sign Size : 750 mm	3) Signs To Be Reflectorised
4)	Steady Beacons To Be Used At Night	5)	Cone Spacing 5m	



DESIGN NOTES

- SECTION 278 WITH WEST SUSSEX DESIGN GUID CONSTRUCTION DETAILS.
- CONTRACTOR TO ESTABLISH LC SERVICES PRIOR TO COMMENCING CO-ORDINATED BY OTHERS.
- EXISTING TREES TO BE PROTECT CLOSE.
- HIGHWAY WORKS SUBJECT TO WEST SUSSEX COUNTY COUNCIL
- HIGHWAY LIGHTING DESIGN TO
- TRAFFIC SIGNAL DESIGN BY OT

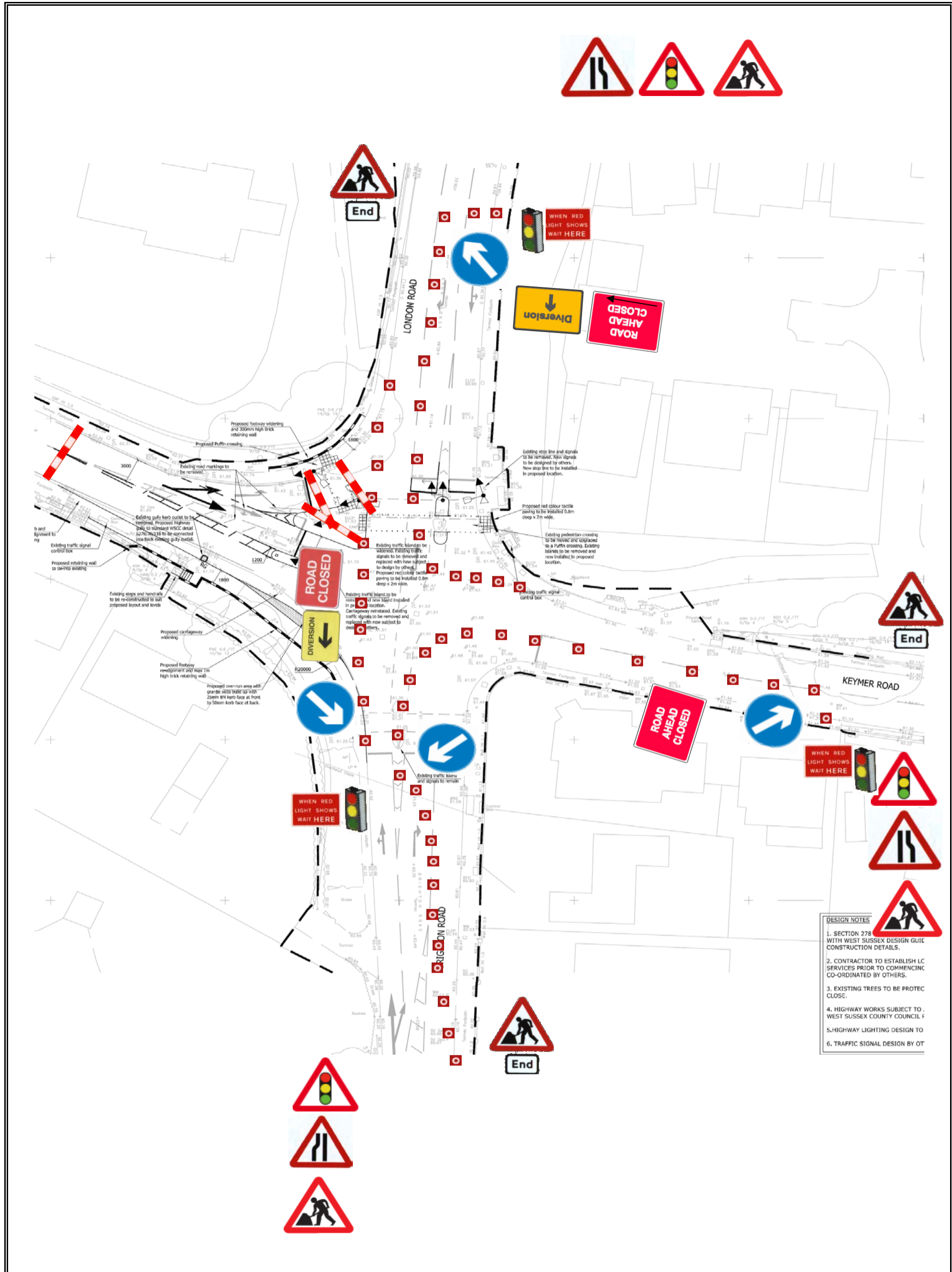
Title	Traffic Management Plans	Number	HC 15
Project	London Road, Hassocks, New Site Entrance		
Works	S278		
1)	Cone Size : 750 mm	6)	24 Hour Traffic Lights
2)	Sign Size : 750 mm		
3)	Signs To Be Reflectorised		
4)	Steady Beacons To Be Used At Night		
5)	Cone Spacing 9m		



DESIGN NOTES

- SECTION 278 WITH WEST SUSSEX DESIGN GUID CONSTRUCTION DETAILS.
- CONTRACTOR TO ESTABLISH LC SERVICES PRIOR TO COMMENCING CO-ORDINATED BY OTHERS.
- EXISTING TREES TO BE PROTECTED.
- HIGHWAY WORKS SUBJECT TO WEST SUSSEX COUNTY COUNCIL
- HIGHWAY LIGHTING DESIGN TO
- TRAFFIC SIGNAL DESIGN BY OT

Title	Traffic Management Plans	Number	HC 16
Project	London Road, Hassocks, New Site Entrance		
Works	S278		
1)	Cone Size : 750 mm	6)	24 Hour Traffic Lights
2)	Sign Size : 750 mm		
3)	Signs To Be Reflectorised		
4)	Steady Beacons To Be Used At Night		
5)	Cone Spacing 9m		



- DESIGN NOTES**
- SECTION 278 WITH WEST SUSSEX DESIGN GUID CONSTRUCTION DETAILS.
 - CONTRACTOR TO ESTABLISH LC SERVICES PRIOR TO COMMENCING CO-ORDINATED BY OTHERS.
 - EXISTING TREES TO BE PROTECTED.
 - HIGHWAY WORKS SUBJECT TO WEST SUSSEX COUNTY COUNCIL
 - HIGHWAY LIGHTING DESIGN TO
 - TRAFFIC SIGNAL DESIGN BY OT

Title	Traffic Management Plans	Number	HC 17
Project	London Road, Hassocks, New Site Entrance		
Works	S278		
1)	Cone Size : 750 mm	6)	24 Hour Traffic Lights
2)	Sign Size : 750 mm		
3)	Signs To Be Reflectorised		
4)	Steady Beacons To Be Used At Night		
5)	Cone Spacing 9m		